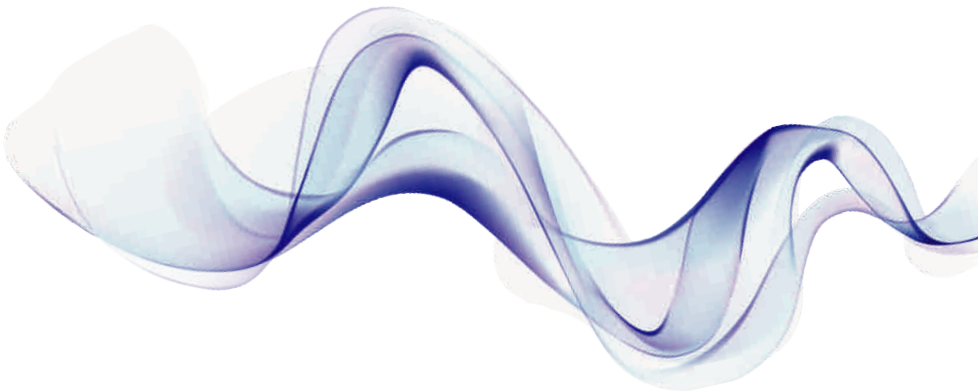




M850 Vet

Handheld Veterinary Monitor



Physical Specifications

Mainframe weight: <350g (full configuration, including the batteries).
Mainframe size: 142mm(W)×78mm(H)×36mm(D)

Environmental Specifications

Temperature: Operating: 5℃ to +40℃
Storage: -20℃ to +55℃
Atmospheric: Operating: 860hPa to 1060hPa
pressure Storage: 500hPa to 1060hPa
Humidity: Operating: 15% to 85%(non condensing)
Storage: less than 93%(non condensing)

Charging Specifications

Power Adapter:
Micro USB: Charge, Data export
Power adapter: Input: AC 100~240V
Output: DC 5V/2A.

Battery Requirement:
Type: Built-in lithium battery
Voltage: 3.7V
Capacity: 4800mAh
Charging time: 3~4h
Run time: >28h

Battery Requirement

Type: Built-in lithium battery
Voltage: 3.7V
capacity: 4800mAh
Charging time: 3~4h
Run time: >28h

Display

Size: 4.3inch
Resolution: 480*272
Touch: Resistive touch
Autorotation Direction: four directions

Indicating Lamp

Alarm indicating: 1(Yellow/Red), on the top of screen.
Battery charging: 1 (orange)
indicating lamp: When charged, it lights orange.
When fully charged or not charged, it doesn't light.

Buttons

Power button: Turn on/off
Freeze/Unfreeze ECG waveform
Shortcut key: Short press to achieve the above function,
long press + power button to achieve
calibration of LCD.

Data Storage

Animal ID: 1~96
SpO2 trend interval: 0s, 30s, 1min, 2min, 5min, 10min
Capacity : 500 groups/animal can be stored (only data, no waveform)

ECG

Lead type: 3-lead, 5-lead
ECG input rang: ±6mV
Input impedance: ≥5.0MΩ
Leakage Current : <10 uA
Frequency response: 0.5—40Hz
GMRR : ≥89dB
Electrode offset potential: ±500mV d.c.
Standardizing signal: 1mV ±5%
Protection Electric isolation voltage : 4000V at 50/60Hz 60s
Defibrillator-proof
Electrode off indicating: with (except RL)
Scan speed: 6.25 mm/s, 12.5 mm/s, 25 mm/s

RESP Specifications

Method: Impedance
Measuring lead: Lead I(RA-LA), II(RA-LL)optional, II(default)
Measurement range: 0~150 rpm (The high/low limit can be
adjusted continuously)
Resolution: 1 rpm
Accuracy: ±2 rpm or ±2%

BLT SpO2

Measurement range: 0~100%
Resolution: 1%
Accuracy: 70~100% : ± 2%
0~69%: unspecified
Alarm: Select the high and low alarm limit of SpO2
Data update period: 13s
Anti-interference:
Anti-motion interference
Anti-electrotome interference
Resisting low perfusion capacity
Recovery time of equipment after defibrillation: 5s
Pitch Tone: with

PR

Measurement range: 25 bpm ~250 bpm
Resolution: 1 bpm
accuracy: ±1% or ± 1 bpm, whichever is greater
Alarm: Select the high and low alarm limit of PR

Standard Configuration

ECG, Respiration Rate

Option

SpO2, Pulse Rate